

Urban Nectar Flows?

Most spring nectar flows in Georgia are over by May. Graphs 1 through 4 are of the last 90 days. Sharpsburg's main flow ended April 15th. GA005 has been losing weight since May 20th.

In Rabun Gap, the flow ended in late May to early June and GA004 has been losing weight since June 6th. However, for the last three years in Athens, GA, nectar continued to flow to the beginning of July.

SC4 near Charleston, SC also continues to gain weight while other hives in South Carolina are losing weight.

Sharpsburg and Rabun Gap are both rural whereas Athens and Charleston are both urban.

Are these late flows the result of ornamental plants that are found in an urban setting or are there native species that have a late flow?

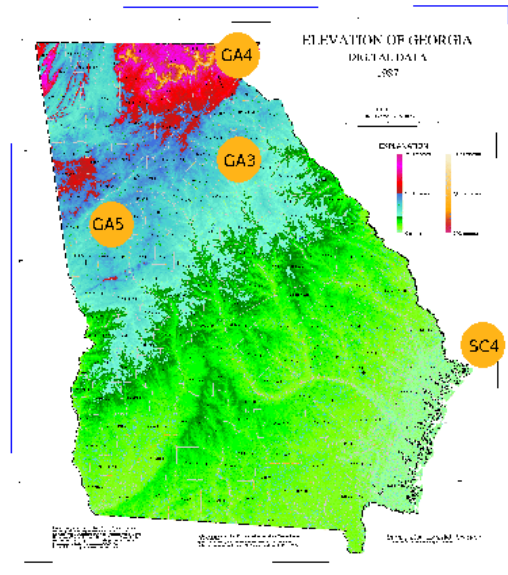
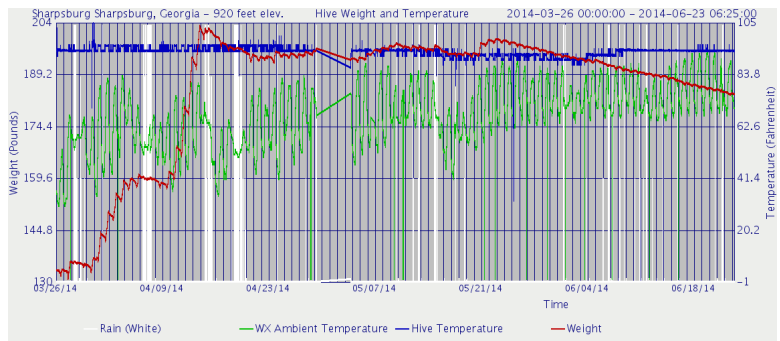
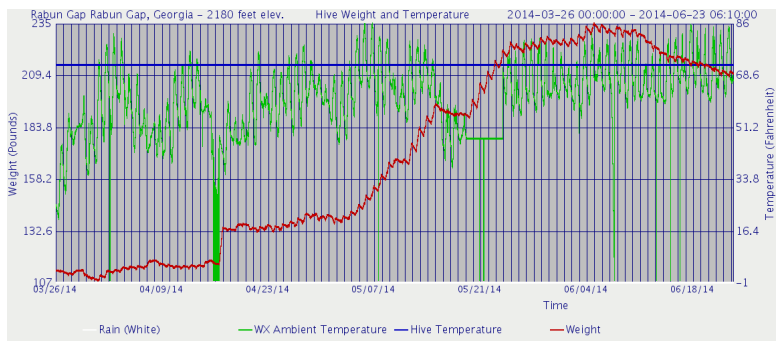


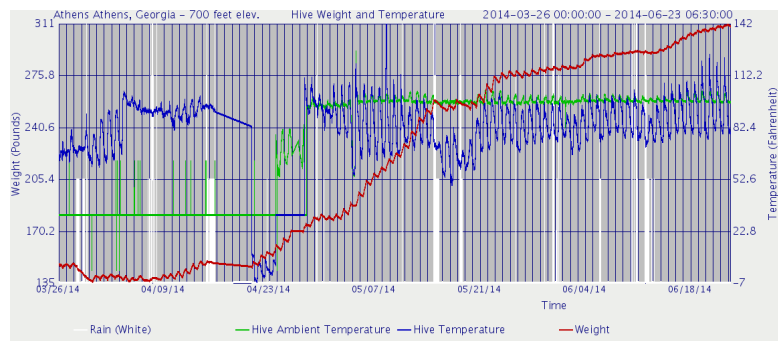
Illustration 1: Locations and elevations of hives.



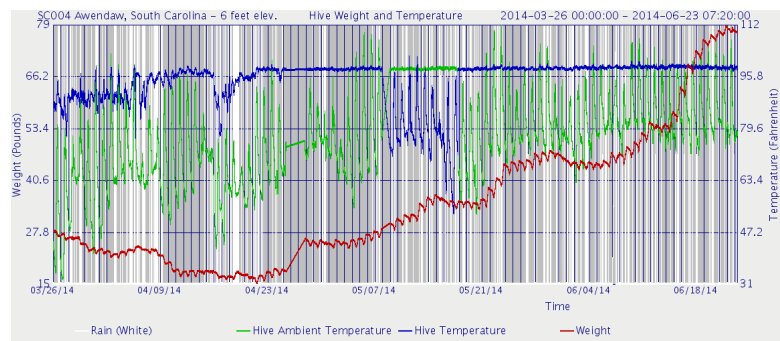
Graph 1: GA5 Sharpsburg. Nectar flows ended April 15th.



Graph 2: GA4 Rabun Gap. Nectar flows ended early June.



Graph 3: GA3 Athens. Nectar flows continue.



Graph 4: SC4 near Charleston, SC. Nectar flows continue.

Don't hesitate to move the scale to a stronger hive should a colony go bad.
 More scale hive management instructions are at <http://hivetool.net/management>